



# GAT MONTHLY MEMBERSHIP PROGRESS REPORT

Results as of: 1/31/2022

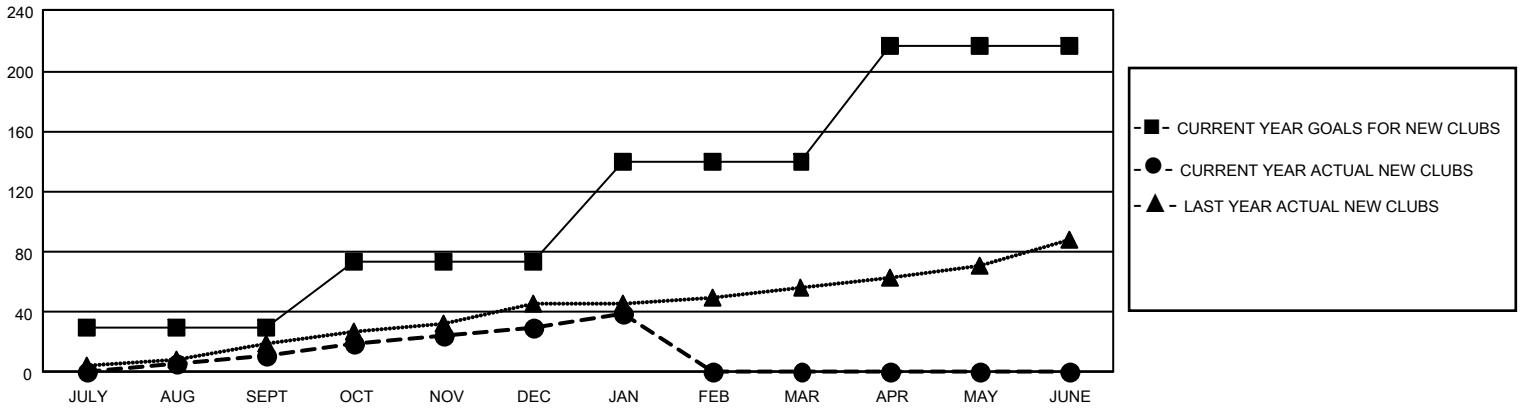
## GAT Constitutional Area 4

REPORT DOES NOT INCLUDE CLUBS IN UNDISTRICTED AREAS.

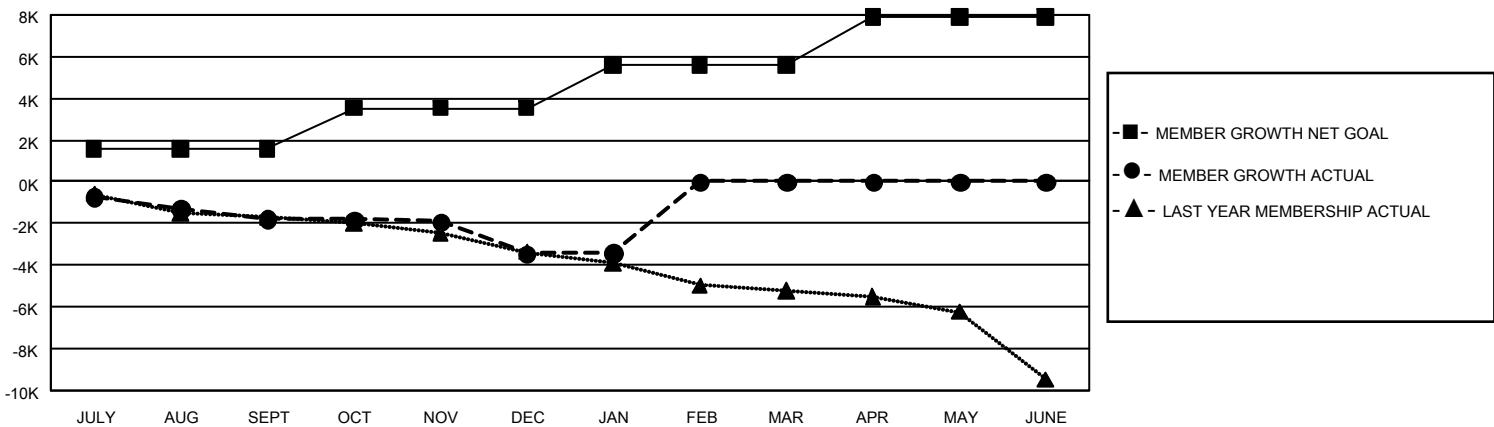
Clubs			
RESULTS FOR 2021-2022			
QUARTER	NEW CLUB GOAL	NEW CLUBS	DROPPED CLUBS
JULY/AUG/SEPT	90	11	76
OCT/NOV/DEC	129	19	51
JAN/FEB/MAR	201	9	20
APR/MAY/JUNE	228	0	0

Members			
RESULTS FOR 2021-2022			
QUARTER	MEMBER GROWTH NET GOAL	MEMBER GROWTH ACTUAL	DROPPED MEMBERS ACTUAL (including transfers)
JULY/AUG/SEPT	1596	2,460	3,837
OCT/NOV/DEC	1935	3,888	5,147
JAN/FEB/MAR	2081	1,566	1,358
APR/MAY/JUNE	2310	0	0

GOALS AND ACTUAL NEW CLUBS CUMULATIVE



GOALS AND ACTUAL MEMBERS CUMULATIVE



<b>DROPPED CLUBS: 147</b>	3,020 CLUBS OF 9,165 ADDED 1 OR MORE NEW MEMBERS  <a href="#">CLICK HERE FOR CUMULATIVE MEMBERSHIP DATA</a>	<b>GENDER DISTRIBUTION</b>	
		MALE 172,474 (75.93%) FEMALE 54,631 (24.05%) NON BINARY 1 (0.00%) PREFER NOT TO ANSWER 46 (0.02%)	TOTAL FAMILY UNIT MEMBERS 10,753 FAMILY MEMBERS PAYING HALF DUES 5,555
<b>DROPPED MEMBERS</b>			
DECEASED 1,376 CLUB CANCELLED 905 OTHER 8,063 <b>TOTAL 10,344</b>			